

64 Todd Road, Georgetown, Ontario, L7G 4R7
Phone/Fax: 905-873-8561 info@green-port.com

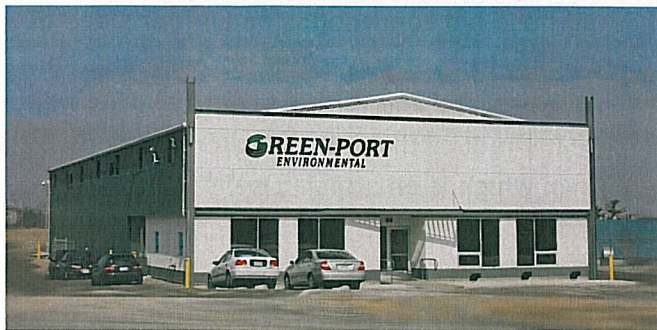
www.green-port.com



Inside This Issue

Green-Port Moves In 1
Quality & Environmental Management 2

Green-Port Moves Into New Recycling/Transfer Station



Mission Accomplished!

Green-Port Environmental (GPE) took occupancy of its new transfer station at 64 Todd Road in Georgetown this March. The facility obtained a Certificate of Approval from The Ministry of the Environment for recycling <50 ppm oil-filled transformers, cable and associated electrical equipment. The facility is an example on how to incorporate "green initiatives" in the community, thereby reducing the carbon footprint, hydro and water demand and the impact on the storm water system.

In addition to being a recycling company, GPE has incorporated 23 "Green Initiatives" into its facility to comply with LEED equivalency:

- Passive solar wall on west side of building by Conservall Engineering, which will generate auxillary heat for the office and shop area in the winter

- Energy efficient heat recovery ventilators (HRVs) and exhaust for office and shop area
- Hydronic in-floor heating in office and shop with 2" SM insulation under floor slabs zoned for areas in use only
- Storm water management system that filters all surface runoff at grade into a StormCepter™ for filtration before it is put into the wetlands. This eliminates the need to connect to the storm water sewer
- Preservation of natural wetlands and habitat on the north east corner of the site
- Sunlight harvesting combined with argon-filled windows at the front and high bay windows on both sides of the shop area
- Epoxy-coated containment floor with continuous 6" concrete curbing for secondary containment tanks of oil from transformers, thereby providing triple containment
- R16 insulation value in overhead doors and double glazed vision panels
- R40 Energy Saver insulation system in ceiling
- R35 Energy Saver insulation system in walls
- Magnetic induction energy efficient down lights, wall packs, and floodlights
- Recycled concrete aggregate surface on roadways and turnaround areas

Green-Port Moves In from page 1

- Galvalume roof with high reflectivity index to prevent “heat sink” effect
- High-efficiency (96%) gas boiler for hydronic in-floor heating and “just in time” water heating for shower and domestic hot water
- High efficiency (96%) gas furnace for auxillary office heating
- High efficiency (94%) air conditioner for the office cooling
- High-efficiency down draft fans in every bay of shop area
- CO detector/exhaust fan
- EnerSave 45 kva step-down transformer
- Sensors combined with timers to switch lunch room, washroom and office lights on/off when not in use
- LED exit lamps
- Low flush toilets for washrooms
- Drought resistant grasses and shrubs in the landscaping in the turn-around island at the front entrance
- Rainwater channels on both sides of the façade which water the tree planters at the front

We’ve also made plans to incorporate additional initiatives, including:

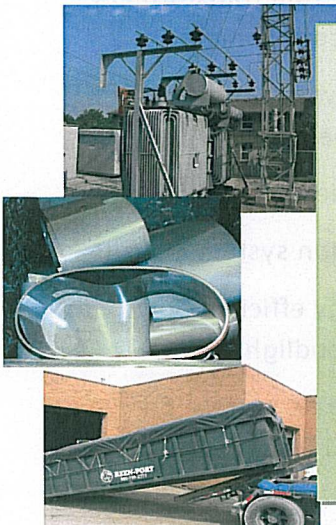
- Rainwater harvesting, which will conserve rainwater into a 7000 I.G. tank and float levels and hose bib connections on all four sides of building to use “grey water” for watering our lawns, shrubs and for dust control. This will greatly reduce the potable water demand on the Town which is on artesian wells

GPE hopes to have a grand opening late this summer once the landscaping is completed.

Quality and Environment Management

On June 25, 2008 Green-Port Environmental achieved ISO 9001 and ISO 14001 certification for its Quality Management and Environmental Management Systems. *“We wanted to be able to standardize our processes in order to ensure characteristics of products and services such as quality, environmental compliance, safety, reliability and efficiency”.*

GPE’s goal is to add the Health & Safety Standard – ISO 18001 to its system. This standard will establish compliance to Ontario Health & Safety standards and eliminate or minimize risk to employees and other interested parties who may be exposed to OH&S risks associated with GPE’s activities.



OUR SERVICES

- PCB packaging, transport and disposal
- Above and below ground tank removals
- Mineral Oil Recycling
- Site Decommissioning / Substation dismantling
- Phase I and II Environmental Site Assessments
- Recycling of transformers, switchgear and obsolete electrical equipment
- Product Destruction
- Packaging, transportation and disposal of hazardous and non-hazardous waste liquids or solids
- Recycling initiatives – scrap recovery and sales
- Roll off bin services/bin rentals

